

Section A - Improving Quality

Care Quality Commission Inspections

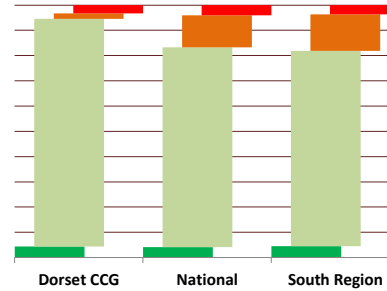
	Ambition	Latest Position	Trend
CQC Ratings	100%	93.5%	↑

CQC Inspections 92 Latest Position as at 6th June 2017
 % Practice Inspected 98.9%

Current Practice Ratings	as at Mar 2016	as at Mar 2017	Latest 2017/18
Outstanding	0	3	4
Good	19	81	83
Requires Improvement	6	3	2
Inadequate	0	3	3
Inspected but not published	0	4	0
Not inspected	73	1	1
% of Practice rated Good or Outstanding	19.4%	88.4%	93.5%

Summary of latest published CQC Practice inspection reports - source: CQC website

Dorset CQC Results compared to National & Regional Position



Dorset Practices Inspected (%)

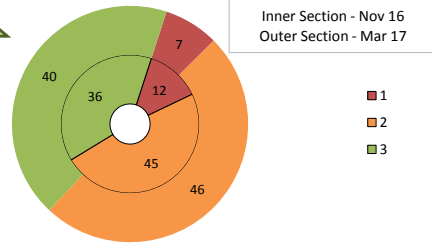


Medicines Management

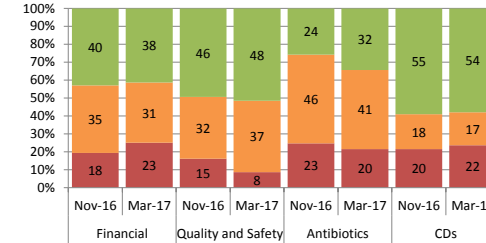
Overall Practice Score		Red	Amber	Green
		Nov-16	12	45
	Mar-17	7	46	40

Medicines Management conduct regular risk assessments of practices against 4 key domains: Financial, Quality & Safety, Antibiotics and Control Drugs (CDs).

Overall the latest practice scores indicate that 7 practices are current at high risk (Mar 2017 results). The profile for against each individual domain is shown in the table/graph on the right.



		Nov-16	Mar-17
		Financial	Red: 12, Amber: 45, Green: 36
Quality and Safety	Red: 18, Amber: 35, Green: 40	Red: 8, Amber: 37, Green: 48	
Antibiotics	Red: 15, Amber: 32, Green: 46	Red: 20, Amber: 41, Green: 32	
CDs	Red: 23, Amber: 46, Green: 24	Red: 22, Amber: 17, Green: 54	



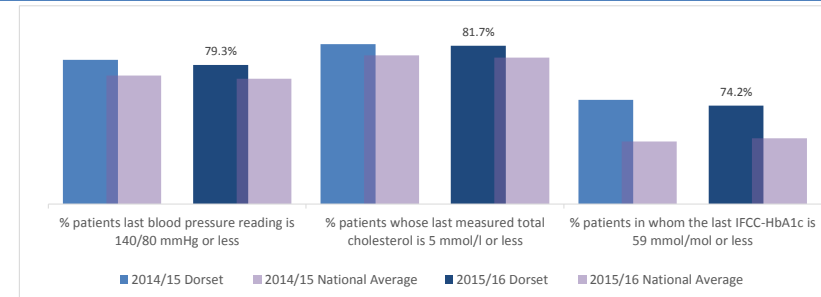
Prevention at Scale

	Ambition	Latest Position	Trend
TBC			

Diabetes - Focus on Hypertension and Cholesterol

		2014/15	2015/16	Change
The percentage of patients with diabetes, on the register, in whom the last blood pressure reading is 140/80 mmHg or less	Dorset CCG	80.0%	79.3%	-0.6%
	National Average	78.0%	77.6%	
The percentage of patients with diabetes, on the register, whose last measured total cholesterol is 5 mmol/l or less	Dorset CCG	81.9%	81.7%	-0.2%
	National Average	80.5%	80.2%	
The percentage of patients with diabetes, on the register, in whom the last IFCC-HbA1c is 59 mmol/mol or less	Dorset CCG	75.0%	74.2%	-0.7%
	National Average	69.8%	70.2%	

Source: QoF returns



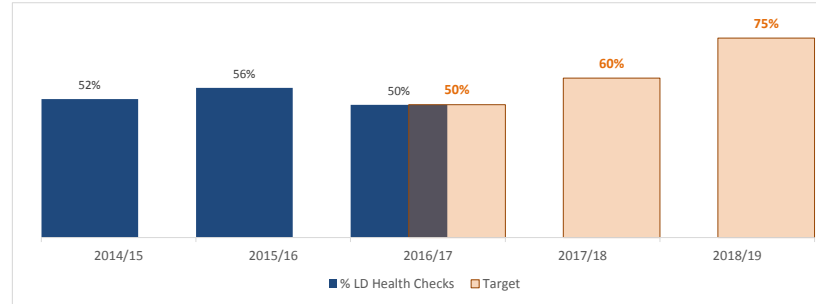
Proposed outcome measures/indicators for the Diabetes patient cohort - using latest nationally published QoF data (16/17 will be included once published) and also propose to establish local system to provide an indicative measure during 17/18.

LD Health Check - use latest CQRS information once available.

	Ambition	Latest Position	Trend
% LD Health Checks	60%	50%	↓

Learning Disabilities Health Checks

The percentage of patients on active Learn Disabilities (LD) register receiving a Health Check in last 12 months	LD Register Checks	2014/15	2015/16	2016/17	2017/18
		3,721	3,329	3,329	
		1,935	1,872	1,659	
%	52%	56%	50%		



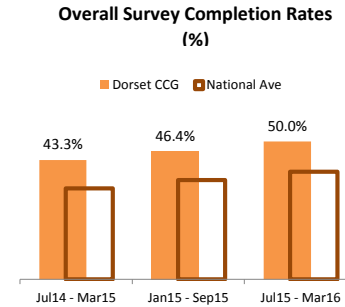
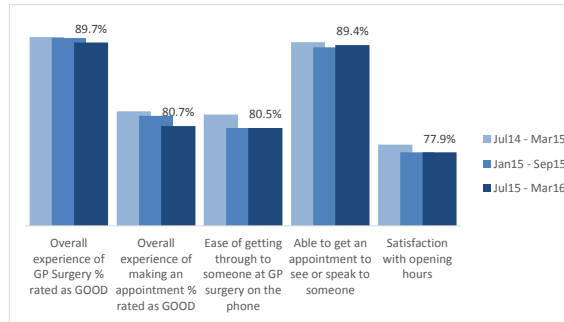
Proposed outcome measures/indicators for the Diabetes patient cohort - using latest nationally published QoF data (16/17 will be included once published) and also propose to establish local system to provide an indicative measure during 17/18. LD Health Check - use latest CQRS information once available.

Section B - Improving Sustainability

Access

	Ambition	Latest Position	Trend
	TBC		

		Jul14 - Mar15	Jan15 - Sep15	Jul15 - Mar16
Overall experience of GP Surgery % rated as GOOD	Dorset CCG	90.2%	90.1%	89.7%
	National Ave	84.8%	84.9%	85.2%
Overall experience of making an appointment % rated as GOOD	Dorset CCG	82.3%	81.8%	80.7%
	National Ave	73.3%	73.3%	73.4%
Ease of getting through to someone at GP surgery on the phone	Dorset CCG	81.9%	80.5%	80.5%
	National Ave	70.6%	63.4%	70.1%
Able to get an appointment to see or speak to someone	Dorset CCG	89.7%	89.1%	89.4%
	National Ave	85.2%	85.0%	84.7%
Satisfaction with opening hours	Dorset CCG	78.7%	77.9%	77.9%
	National Ave	74.9%	74.8%	75.9%
Overall Survey Completion Rates (%)	Dorset CCG	43.3%	46.4%	50.0%
	National Ave	33.0%	36.0%	39.0%

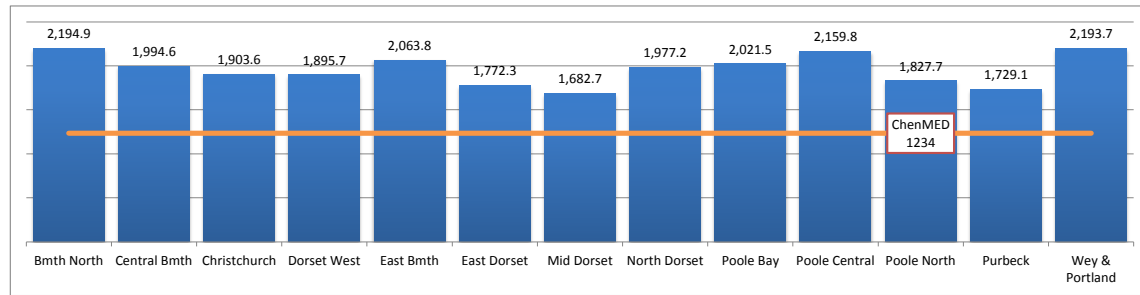


Source: GP National Survey

Latest figures from the National GP Patient Survey. Results for 5 selected questions show the CCG trend over the last 3 survey periods (latest figures will be published in July 2017), overall the CCG results are higher than the national average, but as shown in the chart above the trend is showing reducing pattern. Over note is the increasing 'completion rate' recorded by the CCG which is current 50%, significantly higher than the national average of 39%.

Bed Occupancy Rates - Over 65s Patient Cohort ONLY

Profile by Locality	2015/16		2016/17		Change	
	2015/16	2016/17	Actual	%	Actual	%
Bournemouth North	2,157.4	2,194.9	37	1.7%		
Central Bournemouth	2,069.5	1,994.6	-75	-3.6%		
Christchurch	2,047.7	1,903.6	-144	-7.0%		
Dorset West	1,881.8	1,895.7	14	0.7%		
East Bournemouth	2,188.4	2,063.8	-125	-5.7%		
East Dorset	1,760.5	1,772.3	12	0.7%		
Mid Dorset	1,990.8	1,682.7	-308	-15.5%		
North Dorset	2,174.8	1,977.2	-198	-9.1%		
Poole Bay	2,072.6	2,021.5	-51	-2.5%		
Poole Central	1,958.4	2,159.8	201	10.3%		
Poole North	1,735.8	1,827.7	92	5.3%		
Purbeck	1,833.0	1,729.1	-104	-5.7%		
Weymouth & Portland	2,149.3	2,193.7	44	2.1%		
TOTAL	2,008.7	1,959.1	-50	-2.5%		



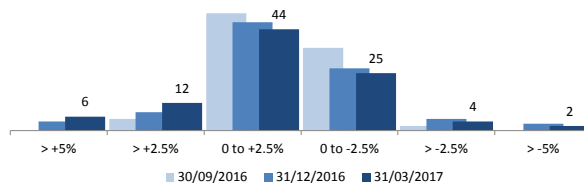
Bed days for Over 65s - All Inpatient Admissions occupied bed days (Elective, Emergency and Non-Elective Non Emergency - ALL Providers), Only for patients aged 65+ and show as a rate per 1000 registered list size (65+). Highlights variation across the localities and also a comparison against the aspirational ChenMED average of 1,234. Overall in 2016/17 the rate of OBDs fell by 2.5% with reductions recorded by the majority of localities most notable the 15.5% reduction in Mid Dorset, conversely 2 localities recorded increases the largest a 10.3% increase in Poole Central.

Capacity Management

Practice Registered Patient List Size

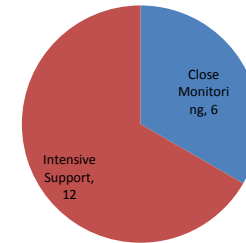
Qrty Change			
Overall Practice List Size	TOTAL Registered List Size	Actual	%
31/03/2016	789,584		
31/06/2016	790,645	1,061	0.13%
30/09/2016	792,862	2,217	0.28%
31/12/2016	793,496	634	0.08%
31/03/2017	795,504	2,008	0.25%
Annual Change		5,920	0.7%

Overall % change in Register List Size by Practice - Against Position @ 31st March 2016



Open Exeter nationally published Practice Registered list size, comparison of quarterly progress against 31st March 2016 baseline. Overall across the CCG the registered list size has increase by 0.7% (5,900 patients) - The bar chart indicates the level of change by practice (% change) indicating that 6 practices have seen a increase of over 5% and 12 an increase of between 2.5% and 5%.

Practice Resilience



Close Monitoring	Intensive Support
6	12

List Closures
Currently NO Closed Lists

Latest details from the current Practice Resilience list includes 18 practices - 12 (66%) are currently receiving intensive support.

Workforce

	Mar-15	Sep-15	Mar-16
Total Patients	777,794	786,459	788,208
% Practices providing a Workforce Submission	86.0%	87.8%	91.8%



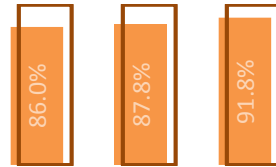
Workforce (All figures FTEs)		Mar-15	Sep-15	Mar-16
GP	FTEs	443.4	444.7	464.6
	% Aged 55+	15.4%	17.2%	17.2%
Nurses	FTEs	187.9	206.2	224.8
	% Aged 55+	33.2%	34.8%	34.8%
Direct Patient Care (other Allied Health Professionals)	FTEs		120.5	127.8
	% Aged 55+		28.2%	29.2%
Admin	FTEs		792.6	849.0
	% Aged 55+		36.4%	37.2%
Overall Primary Care Workforce	FTEs		1,564.0	1,666.3
	% Aged 55+		30.4%	31.6%

Source: NHS Digital - General and Personal Medical Services, Provisional Experimental statistics (Minimum Data set Submissions)

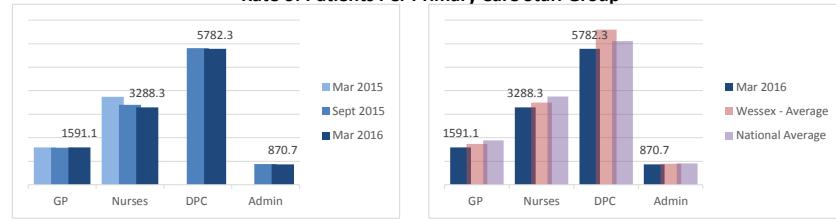
	GPs	Nurse Practitioner	Practice Nurse	Dispenser	Admin	TOTAL
Current Vacancies	18	2	2	1	4	27

Source: Doorway to Dorset website

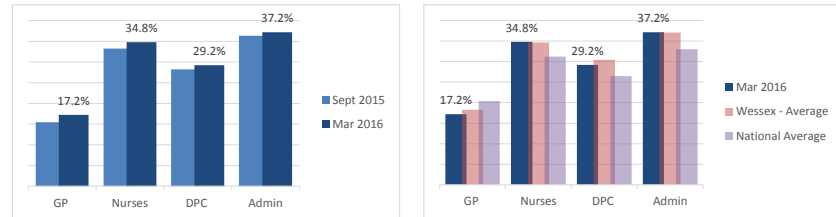
% Practices providing a Workforce Submission



Rate of Patients Per Primary Care Staff Group



Primary Care Workforce Aged 55+ by Staff Group



Workforce data taken from the NHS Digital General Practice Medical Service minimum data set (individuals practice submissions every 6 months). Figures above show that currently 91.8% of Dorset's practice provided a submissions. Overall it shows a declining pattern in terms of the rate of primary care staff per patient (across all 4 staff groups) - however the rates in Dorset remain lower than both the Wessex and National average. The age profile (% staff aged 55+) is showing increases across all staff groups.

Section C - Improving Right Care and Demand Management

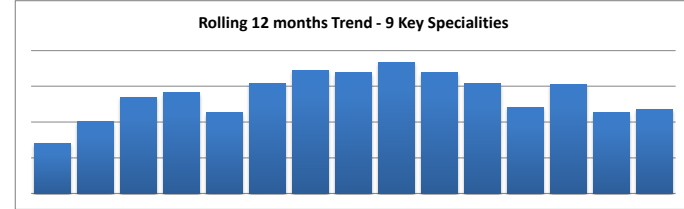
GP Referrals - Summary of 9 key 'Collaborative Agreement' Specialities

Ambition	Latest Position	Trend
TBC		

Latest Year to Date comparison (Apr-May 2016 v 2017)
- Using working Days

	2015/16	2016/17	Change	
			Actual	%
101 - Urology	6,896	7,155	259	3.8%
110 - Trauma & Orthopaedics	14,690	14,510	-180	-1.2%
120 - ENT	9,494	9,768	274	2.9%
130 - Ophthalmology	12,317	12,937	620	5.0%
301 - Gastroenterology	6,194	6,063	-131	-2.1%
320 - Cardiology	9,003	8,911	-92	-1.0%
330 - Dermatology	12,027	12,752	725	6.0%
400 - Neurology	3,570	3,532	-38	-1.1%
420 - Paediatrics	3,549	3,802	253	7.1%
TOTAL	77,740	79,430	1,690	2.2%

2016/17	2017/18	Change	
		Actual	%
29.0	30.1	1.2	4.1%
60.6	60.2	-0.4	-0.7%
41.0	40.8	-0.2	-0.4%
55.4	51.0	-4.4	-8.0%
23.9	23.1	-0.8	-3.2%
36.9	35.6	-1.3	-3.5%
52.7	55.8	3.1	5.9%
14.5	15.3	0.8	5.8%
16.2	17.2	1.0	6.1%
330.1	329.2	-1.0	-0.3%



Latest GP Referral dataset (RBH, PHT & DCH) for the 9 key specialties are currently showing a fair stable trend, they increase by 1.9% in 2016/17. Latest month 1 (Apr 17) figures show a reduction overall by when equated by working days show a 2.9% increase

Oral Surgery - Excluded NHS England Commissioned Activity

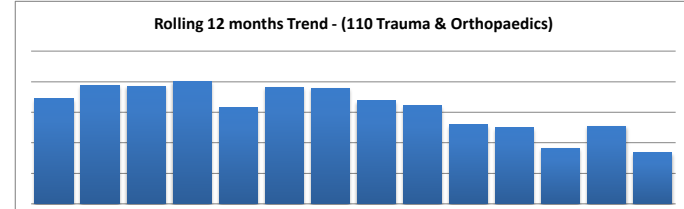
GP Referrals - CCLIP - Key Focus Speciality - 110 Trauma & Orthopaedics

Profile by Locality

	2015/16	2016/17	Change	
			Actual	%
Bournemouth North	1,275	1,269	-6	-0.5%
Central Bournemouth	935	983	48	5.1%
Christchurch	1,572	1,672	100	6.4%
Dorset West	797	731	-66	-8.3%
East Bournemouth	1,468	1,485	17	1.2%
East Dorset	1,491	1,480	-11	-0.7%
Mid Dorset	864	742	-122	-14.1%
North Dorset	742	686	-56	-7.5%
Poole Bay	1,270	1,289	19	1.5%
Poole Central	1,187	1,257	70	5.9%
Poole North	949	937	-12	-1.3%
Purbeck	767	715	-52	-6.8%
Weymouth & Portland	1,303	1,174	-129	-9.9%
None	70	90	20	28.6%
TOTAL	14,690	14,510	-180	-1.2%

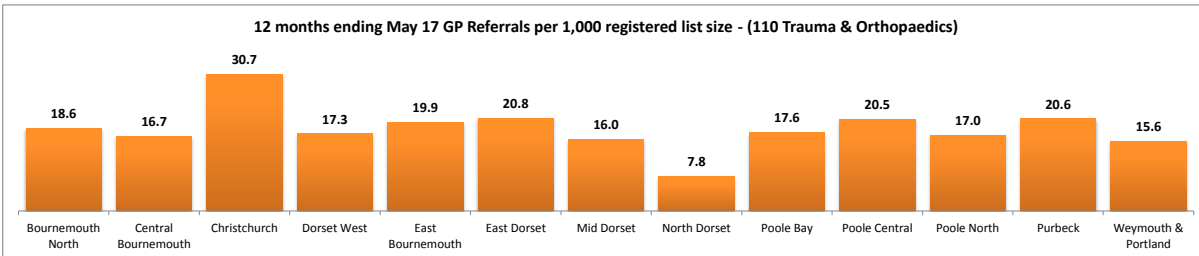
Using Rate per working day

2016/17	2017/18	Change	
		Actual	%
5.8	5.3	-0.5	-8.7%
4.0	3.9	0.0	-0.7%
7.2	7.6	0.4	5.5%
3.3	2.9	-0.4	-12.0%
5.9	6.0	0.1	1.7%
6.6	6.3	-0.3	-4.2%
3.5	2.8	-0.7	-20.4%
2.8	2.7	0.0	-1.4%
5.3	6.2	0.8	15.2%
4.8	5.8	1.1	22.4%
4.1	3.3	-0.8	-19.9%
3.0	2.9	-0.2	-5.8%
4.3	4.5	0.2	3.9%
60.6	60.2	0	-0.7%



High volume area of (110) Trauma & Orthopaedic which is a focus for the 17/18 CCLIP is currently showing a reducing trend. Last year the volume of GP referrals reduced by 1.2% (-180), with a distinctive split between the localities, with increases in the east of the county.

Latest rolling 12 month figures highlight variation in the rate of Orthopaedics referrals per 1000 registered list size - the rates vary from 30.5 per 1000 in Christchurch to 7.7 per 1,000 in North Dorset.

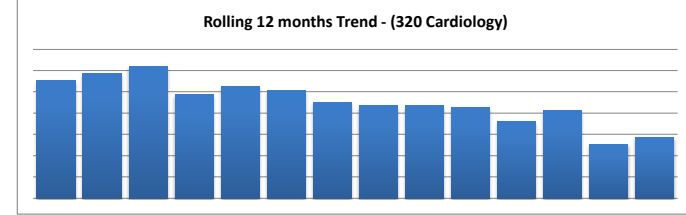


GP Referrals - CCLIP - Key Focus Speciality - 320 Cardiology

Profile by Locality			Change	
	2015/16	2016/17	Actual	%
Bournemouth North	724	792	68	9.4%
Central Bournemouth	575	635	60	10.4%
Christchurch	963	993	30	3.1%
Dorset West	615	504	-111	-18.0%
East Bournemouth	937	871	-66	-7.0%
East Dorset	809	883	74	9.1%
Mid Dorset	619	460	-159	-25.7%
North Dorset	538	510	-28	-5.2%
Poole Bay	699	756	57	8.2%
Poole Central	739	734	-5	-0.7%
Poole North	513	504	-9	-1.8%
Purbeck	276	306	30	10.9%
Weymouth & Portland	968	935	-33	-3.4%
None	28	28	0	0.0%
TOTAL	9,003	8,911	-92	-1.0%



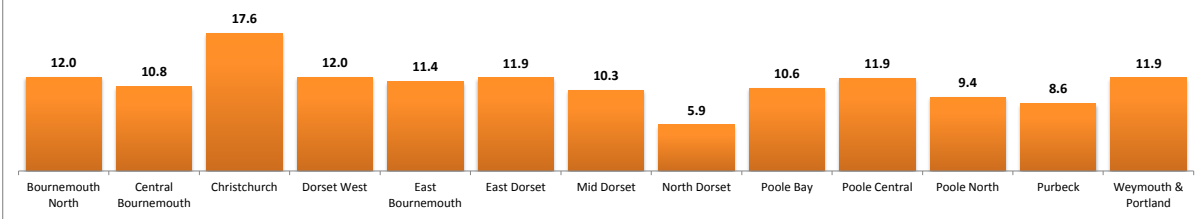
Using Rate per working day		Change	
2016/17	2017/18	Actual	%
3.3	3.7	0.4	12.9%
2.5	2.5	0.0	0.0%
4.6	4.1	-0.6	-12.1%
2.3	2.1	-0.2	-8.3%
3.8	3.4	-0.4	-9.8%
4.1	3.1	-1.0	-25.5%
1.5	1.5	0.0	-1.7%
1.9	2.0	0.2	9.3%
2.3	3.3	1.0	42.8%
3.1	3.5	0.4	13.5%
2.1	2.1	-0.1	-3.3%
1.3	1.1	-0.2	-18.2%
4.0	3.3	-0.8	-19.6%
36.9	35.6	-1	-3.5%



(320) Cardiology is also currently showing a reducing trend. Last year the volume of GP referrals reduced by 1% (-92), with a distinctive split between the localities, with increases in the east of the county. Most notable were reductions in Dorset West (-18%) and Mid Dorset (-25%). Latest 17/18 figures (using standardise rate per working day) indicate a further 3.5% reduction using the month 2 position

Latest rolling 12 month figures highlight variation in the rate of Cardiology referrals per 1000 registered list size - the rates vary from 17.6 per 1000 in Christchurch to 5.9 per 1,000 in North Dorset.

12 months ending May 17 GP Referrals per 1,000 registered list size - (320 Cardiology)



GP Referrals - CCLIP - Key Focus Speciality - 330 Dermatology

Profile by Locality

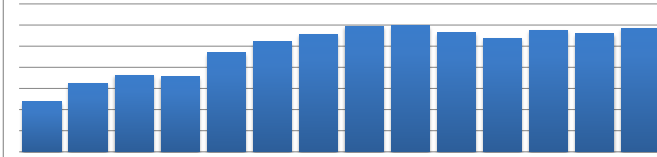
			Change	
	2015/16	2016/17	Actual	%
Bournemouth North	870	908	38	4.4%
Central Bournemouth	614	715	101	16.4%
Christchurch	1,184	1,371	187	15.8%
Dorset West	623	744	121	19.4%
East Bournemouth	1,073	1,104	31	2.9%
East Dorset	1,358	1,469	111	8.2%
Mid Dorset	685	659	-26	-3.8%
North Dorset	722	672	-50	-6.9%
Poole Bay	1,168	1,229	61	5.2%
Poole Central	1,120	1,187	67	6.0%
Poole North	860	932	72	8.4%
Purbeck	615	658	43	7.0%
Weymouth & Portland	1,095	1,075	-20	-1.8%
None	40	29	-11	-27.5%
TOTAL	12,027	12,752	725	6.0%



Using Rate per working day

			Change	
	2016/17	2017/18	Actual	%
	4.1	3.7	-0.4	-8.6%
	3.0	3.7	0.7	21.9%
	4.6	6.7	2.1	45.7%
	2.8	3.3	0.5	16.1%
	4.8	4.8	0.0	0.8%
	6.3	6.5	0.2	2.7%
	2.6	2.6	0.0	0.3%
	2.5	3.1	0.6	24.9%
	5.9	5.1	-0.7	-12.8%
	5.6	4.6	-1.0	-17.7%
	4.1	4.0	-0.1	-3.0%
	2.7	2.9	0.2	8.0%
	3.7	4.8	1.0	27.8%
	52.7	55.8	3	5.9%

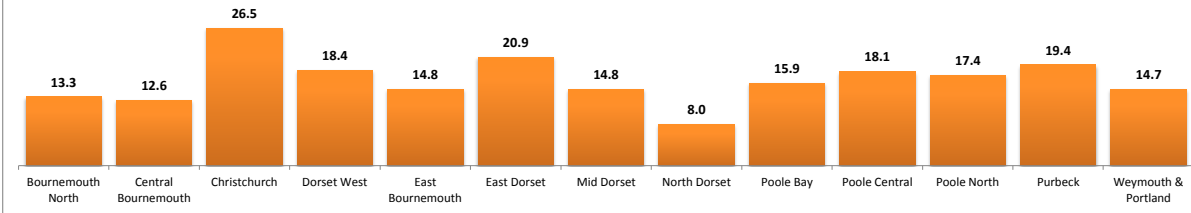
Rolling 12 months Trend - (330 Dermatology)



(330) Dermatology is also currently showing an increasing trend. Last year the volume of GP referrals increased by 6% (725), with increase recorded in all localities with the exception of Mid and North Dorset. Latest 17/18 figures (using standardise rate per working day) indicate a further 5.9% increase using the month 2 position

Latest rolling 12 month figures highlight variation in the rate of Cardiology referrals per 1000 registered list size - the rates vary from 26.5 per 1000 in Christchurch to 8.0 per 1,000 in North Dorset.

12 months ending May 17 GP Referrals per 1,000 registered list size - (330 Dermatology)



Right Care (2017/18 CCLIP Priorities)

Ambition	Latest Position	Trend
TBC		

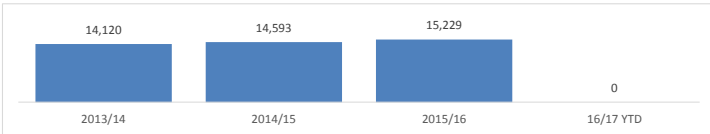
COPD - Chronic Obstructive Pulmonary Disease

	16/17 YTD
Patient COPD Severity Recorded (% of COPD Register)	Currently Not Available
% of COPD Patients with a MRC breathlessness Score Recorded	Currently Not Available
% of COPD Patients Immunized	Currently Not Available

Source - GRASP COPD tool - practice submissions to CHART Online

	2013/14	2014/15	2015/16	16/17 YTD
Overall Register Size	14,120	14,593	15,229	Currently Not Available
Prevalence Rate	1.83%	1.89%	1.95%	Available

COPD Patients currently recorded at Smokers (GRASP COPD Reports)	Currently Not Available
% of above with smoking cessation activity	Currently Not Available

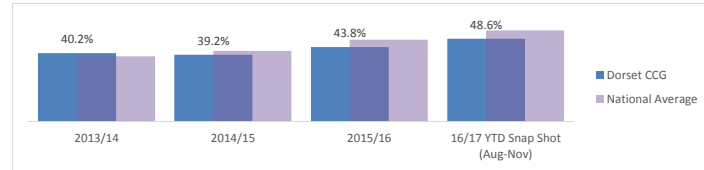


Proposed outcome measures/indicators for the COPD element of the CCLIP - combination of patient 'quality of service' indicators which will be collected from GRASP COPD practice submissions. Also included the latest register size (QOF published) and indication of latest register size.

Ambition	Latest Position	Trend
TBC		↑

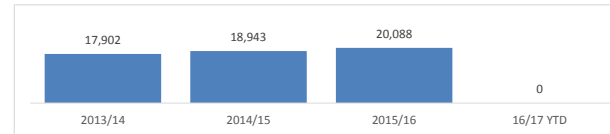
AF - Atrial Fibrillation

	2013/14	2014/15	2015/16	16/17 YTD Snap Shot (Aug-Nov)
Percentage of patients in known AF cohort before stroke admitted to hospital who had been prescribed anticoagulation prior to their stroke	40.2%	39.2%	43.8%	48.6%
National Average	38.3%	41.4%	48.0%	53.5%



	2013/14	2014/15	2015/16	16/17 YTD
Overall Register Size	17,902	18,943	20,088	Currently Not Available
Prevalence Rate	2.33%	2.45%	2.52%	Available

Strokes expected annually if high risk patients remain untreated (GRASP AF Reports)	Currently Not Available
---	-------------------------



Proposed outcome measures/indicators for the AF element of the CCLIP - combination of patient 'quality of service' indicators which will be collected from GRASP AF practice submissions. Also included the latest register size (QOF published) and indication of latest register size.